

 **Electronic thermostats**

These electronic surface sensing and ambient thermostats provide accurate control for all approved heating cables.

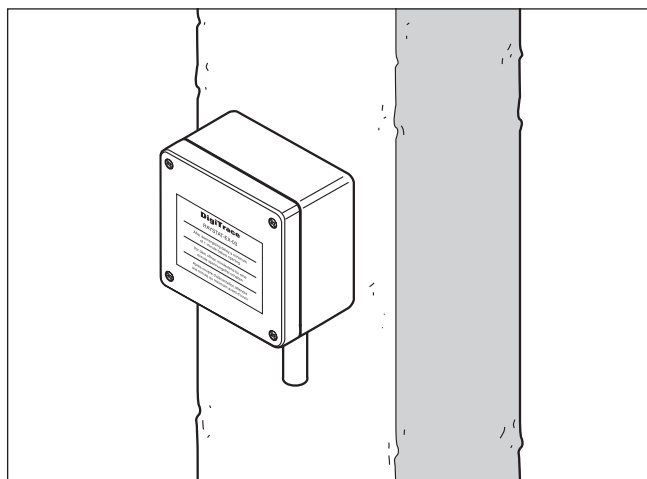
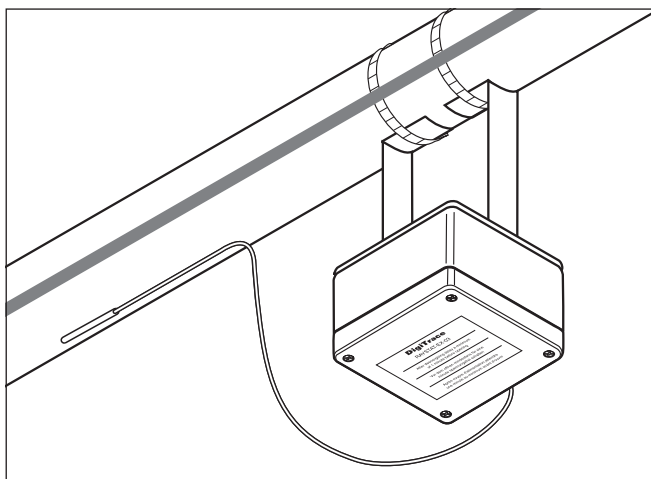
The enclosure, electronics and sensor cable are approved to the requirements of EN 50 014, EN 50 019, EN 50 020 and EN 50 028. The thermostats can be supplied at nominal voltages of either 110V 50/60 Hz or 230V 50/60 Hz and have a double pole switch rated at 16 A.

The switch contacts can be arranged to be volt free. Temperature setting is accurate via digital thumb wheel switches inside the enclosure.

The surface sensing version is supplied with a Pt 100 sensor and a 2 m long stainless steel sheathed extension cable giving freedom to locate the electronics remote from the sensor. The ambient version is supplied with a local Pt 100 sensor and a wind shield.

The enclosure is manufactured from high impact resistant glass filled polyester offering IP66 protection. Two M20 and one M25 entries allow a combination of power cable and heating cables to be connected to the units.

For maximum pipe temperatures up to 215°C, the units can be mounted on the pipe using a support bracket.



EX-03

EX-04

**Application**

Surface sensing

ambient sensing

**Approvals**

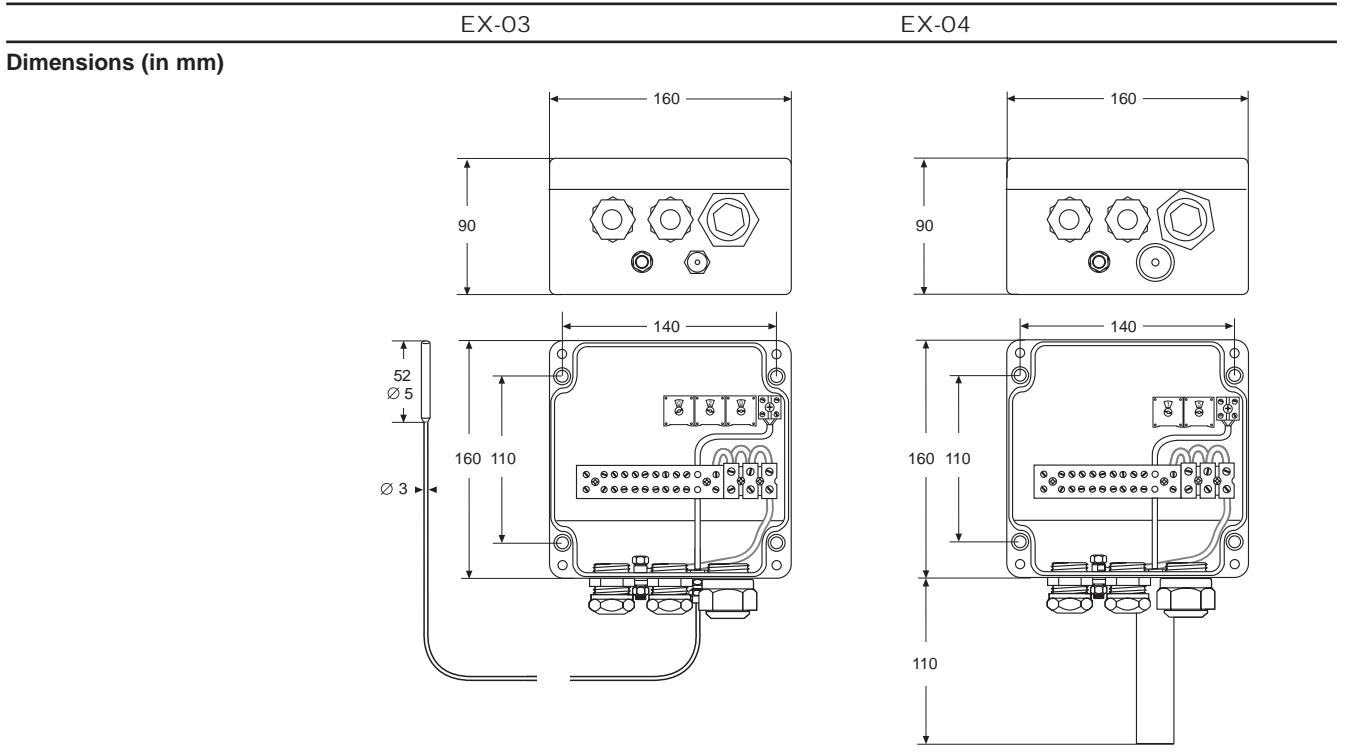
BASEEFA no. 98D8050X,  
EEx e m ia IIC T6 to EN 50 014,  
EN 50 019, EN 50 020 and  
EN 50 028  
BAS99ATEX2115X



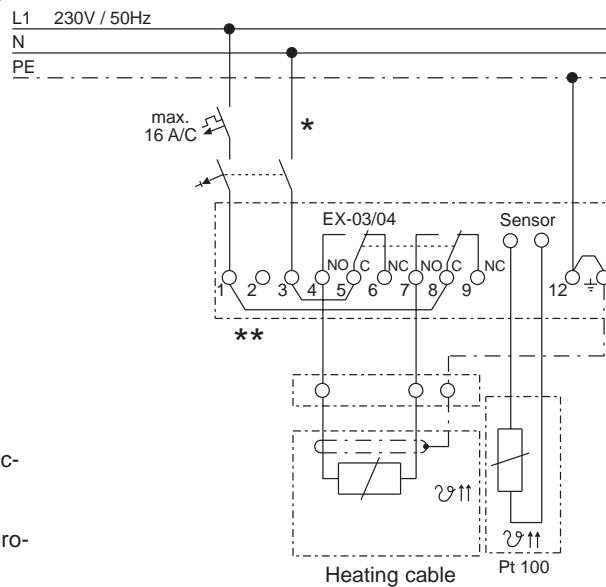
BASEEFA no. 98D8050X,  
EEx e m ia IIC T6 to EN 50 014,  
EN 50 019, EN 50 020 and  
EN 50 028  
BAS99ATEX2115X

**Product specification**

Temperature range	0°C to 499°C	0°C to 49°C
Ingress protection	IP66	IP66
Deluge testing	Passed Shell UK requirements	Passed Shell UK requirements
Switching accuracy	±1 K at 5°C ±1% of setpoint above 100°C	±1K at 5°C
Switching differential (Hysteresis)	≈ 1°C at 100°C ≈ 2°C at 200°C ≈ 5°C at 499°C	≈ 1°C
Relays	Two single pole change over contacts (optional volt free)	Two double pole change over contacts (optional volt free)
Switching capacity	16A at 110/230V/254V 50/60Hz, resistive load	16A at 110/230V/254V 50/60 Hz, resistive load
Ambient temperature range	-50°C to +40°C	-50°C to +40°C
Supply voltage	110/230 V-10%/254V+10%	110/230 V-10%/254V+10%
Terminal size	max. 4 mm <sup>2</sup>	max. 4 mm <sup>2</sup>



**Typical wiring diagram for direct switching**



\* Circuit breaker configurations may vary according to local standards/requirements

\*\* Link 1-8 and/or 3-5 can be removed to provide potential-free contacts

<b>Cable entries</b>	2 x M20 glands (cable $\varnothing$ 7.5 – 13mm) 1 x M25 with M25/M20 adaptor and plug	2 x M20 glands (cable $\varnothing$ 7.5 – 13mm) 1 x M25 with M25/M20 adaptor and plug
<b>Sensor</b>	2 wire Pt 100, stainless steel sensor, 2 m long	2 wire Pt 100, stainless steel sensor, complete with wind shield
<b>Mounting method</b>	Support bracket SB-100 o SB-101 or surface mounting with 4 fixing holes on 110x140 mm centres	Support bracket SB-100 or SB-101 or surface mounting with 4 fixing holes on 110x140 mm centres
<b>Ordering details</b>		
Part Description	EX-0	EX-04
RPN (& Weight)	333472-000 (3.0 kg)	462834-000 (3.1 kg)